



CMAT 2025 Slot 2 Question Paper

TAKE THIS MOCK IN EXAM FORMAT

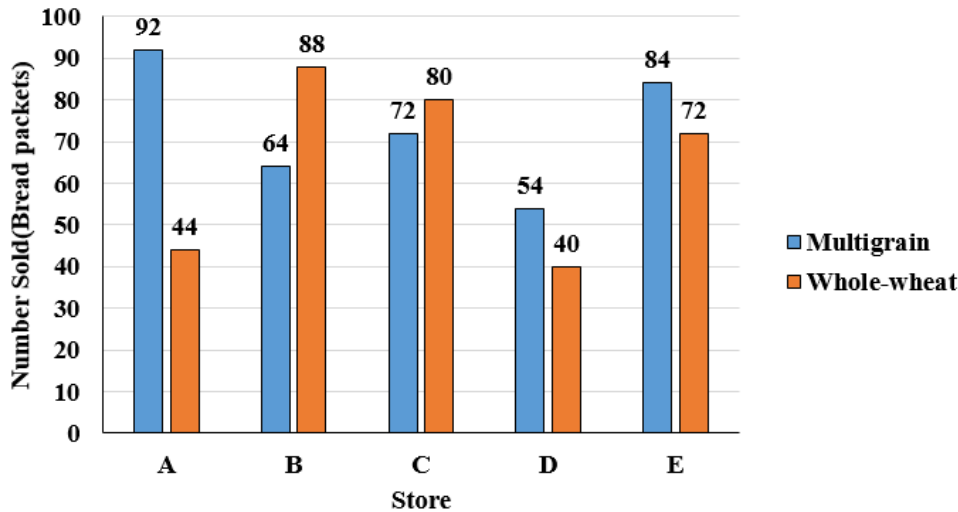
[Download Other Similar Mocks Here](#)

All rights reserved. No part of this publication may be reproduced, distributed, or transmitted in any form or by any means, electronic, mechanical, photocopying, recording or otherwise, or stored in any retrieval system of any nature without the permission of cracku.in, application for which shall be made to support@cracku.in

Quantitative Techniques and Data Interpretation

Instructions [1 - 3]

Comprehension: Study the bar-graph given below carefully and answer the questions. Bar-graph given below shows the number of packets of bread sold by five stores of two types i.e. multi grain and whole wheat.



1. If another store 'F' sold number of multigrain packets which is average number of multigrain packets sold by stores 'C', 'D' and 'E' and average number of whole-wheat packets sold by stores 'A' and 'E'. If store 'B' sold each packet at ₹ 240 and store 'F' sold each packet at 20% more than that of 'B', then total revenue collected by store 'F' is.

- A ₹ 24246
- B ₹ 36864
- C ₹ 28246
- D ₹ 32684



2. The total number of packets sold by store 'C' is approximately what percent more or less than the total number of packets sold by store 'E' ?

- A 3% more
- B 3% less
- C 5% more
- D 5% less

3. Multigrain packets sold by stores 'A' and 'B' together are what percent more or less than whole-wheat packets sold by stores 'C' and 'D' together ?

- A 25% more

- B 25% less
- C 30% less
- D 30% more

4. The probability that the birthdays of 4 different persons will fall in exactly two calendar months is :

- A $\frac{77}{1728}$
- B $\frac{17}{87}$
- C $\frac{11}{144}$
- D $\frac{3}{144}$



5. In a $\triangle PQR$, point X is on PQ and point Y is on PR such that XP = 1.5 units, XQ = 6 units, PY = 2 units and YR = 8 units. Consider the following statements :

Statement I : QR = 5 XY

Statement II : $\triangle PXY$ is similar to $\triangle PRQ$

In the light of the above statements, choose the correct answer from the options given below.

- A Both Statement I and Statement II are true
- B Both Statement I and Statement II are false
- C Statement I is true but Statement II is false
- D Statement I is false but Statement II is true

6. A consignment of 15 wrist watches contains 4 defectives. The wrist watches are selected at random, one by one and examined. The ones examined are not replaced back. What is the probability that ninth one examined is the last defective?

- A $\frac{11}{195}$
- B $\frac{8}{195}$
- C $\frac{17}{195}$
- D $\frac{16}{195}$

7. In how many ways can the following prizes be given away to a class of 30 students, first and second in Mathematics, first and second in Physics, first in Chemistry and first in English?

- A $\frac{30!}{4!}$
- B $(30)^4 \times (29)^4$
- C $(30)^3 - 1$

D $(30)^4 \times 1(29)^2$

DOWNLOAD CMAT PREVIOUS YEAR PAPERS



8. What value comes in place of question mark (?) in the following statements and arrange them in descending order.

A. $\frac{5}{9} \times (225.40 - 45.4) = (?)^2$

B. $\sqrt{1024} \times 40 + (20)^2 + 0.5\% \text{ of } 9600 + 469 = (?)^3$

C. $8^{12} \div 16^2 \text{ of } 32^3 \times \sqrt{256} = (2)^?$

D. $18\frac{1}{3} + 9\frac{2}{3} - 10\frac{1}{3} = 1\frac{2}{3} + ?$

Choose the correct answer from the options given below :

A $D > C > A > B$

B $C > A > B > D$

C $D > C > B > A$

D $C > D > B > A$

9. Ravi took a loan from HDBC Bank for his 2-year MBA program at IIM. He took the loan of ₹ 6 lakh such that he would be charged at 8% per annum compound interest during his program and at 10% per annum compound interest after completion of course. He returned half of the amount which he had to pay on the completion of his program and remaining after 2 years. What is the total amount returned by Ravi?

A ₹ 7.73323 lakh

B ₹ 6.83231 lakh

C ₹ 7.58 lakh

D ₹ 7.336 lakh

10. Amit can do 50% more work than Bhushan in same time. Bhushan alone can do a piece of work in 30 hours. Bhushan starts working and had already worked for 12 hours when Amit joins him. How many hours should Bhushan and Amit work together to complete the remaining work?

A 6 hours

B 12 hours

C 4.8 hours

D 7.2 hours



CMAT EXAM PATTERN

CHECK OUT HERE

11. A cylindrical box of radius 5 cm contains 10 solid spherical balls, each of radius 5 cm. If the top most ball touches the upper cover of the box, then the volume of empty space in the box is :

A $\frac{2500}{3} \pi \text{ cm}^3$

B $5000\pi cm^3$

C $2500\pi cm^3$

D $\frac{5000}{3}\pi cm^3$

12. Given below are two statements:

Statement I : The ratio of the circumference of two circles is 3:4, then the ratio of their area is 9: 16.

Statement II : If the circumference and the area of a circle are numerical equal, then the diameter is equal to 4.

In the light of the above statements, choose the correct answer from the options given below.

A Both Statement I and Statement II are true

B Both Statement I and Statement II are false

C Statement I is true but Statement II is false

D Statement I is false but Statement II is true

13. Match List I with List II :

	List I		List II
A.	If $4a = 5b$ and $7b = 9c$, then $a : b : c$ is equal to	I.	$7 : 9 : 11$
B.	If $A = \frac{1}{4}B$ and $B = \frac{1}{2}C$, then $A : B : C$ is equal to	II.	$45 : 36 : 28$
C.	If $P : Q : R = 2 : 3 : 4$, then $P/Q : Q/R : R/P$ is equal to	III.	$1 : 4 : 8$
D.	If $a/7 = b/9 = c/11$, then $a : b : c$ is equal to	IV.	$8 : 9 : 24$

Choose the correct answer from the options given below :

A A-IV, B-II, C-I, D-III

B A-IV, B-III, C-I, D-II

C A-II, B-III, C-I, D-IV

D A-II, B-III, C-IV, D-I



14. Three vessels 'P', 'Q' and 'R' of same capacity are all full. Vessels 'P' and 'Q' contain mixture of milk and water in the ratios 4 : 1 and 7 : 3 respectively while vessel 'R' contains only pure milk. The contents of these vessels are poured into a larger vessel 'S'. After drawing 30 litres of mixture from vessel 'S', the final quantity of water left in vessel 'S' is 40 litres, then the capacity of each vessel is :

A 80 litres

B 85 litres

C 90 litres

D 95 litres

15. Candidates in a competitive examination consisted of 60% men and 40% women. 70% men and 75% women cleared the qualifying test and entered the final test, where 80% men and 70% women were successful. Which of the following statements is/are correct ?

A. Success rate is higher for women.
B. More men cleared the examination than women.
C. Success rate is higher for men.
D. Overall success rate is below 50%

Choose the correct answer from the options given below :

A A only
B A and D only
C B and D only
D B and C only

16. Arrange the following in descending order :

A: $\sqrt{401} - \sqrt{399}$
B: $\sqrt{301} - \sqrt{299}$
C: $\sqrt{101} - \sqrt{99}$
D: $\sqrt{201} - \sqrt{199}$

A $C > A > B > D$
B $D > C > B > A$
C $C > B > A > D$
D $C > D > B > A$

 **JOIN CMAT 2025 CRASH COURSE**
Covers Complete Syllabus [REGISTER NOW](#) 

17. The value of $\left(\frac{x^a}{x^b}\right)^{(a^2+ab+b^2)} \left(\frac{x^b}{x^c}\right)^{(b^2+bc+c^2)} \left(\frac{x^c}{x^a}\right)^{(c^2+ca+a^2)}$ is:

A -1
B X^{abc}
C 1
D $X^{(a+b+c)}$

18. A person sold an article for ₹ 136 and incurred 15% loss. Had he sold it for ₹ x, he would have obtained a profit of 15%. Which one of the following is correct ?

A $190 < x < 200$
B $180 < x < 190$
C $170 < x < 180$

D $160 < x < 170$

19. Ramesh purchased two mobile phones from a shop. He sold first mobile phone at the price of ₹ 18750 and the second mobile phone at the price of ₹ 14250. If the profit percent on first mobile phone is five times of the loss percent on the second mobile phone, then find out the overall profit made by Ramesh after selling both the mobile phones, given that he purchased both at same cost.

- A 15%
B 14%
C 12%
D 10%

DOWNLOAD CMAT PREVIOUS PAPERS



20. The length of a rectangle is increased by 25%. By what percent should its breadth be decreased so as to maintain the same area ?

- A 20%
B 25%
C 30%
D 40%



CMAT Online Coaching By Toppers

Covers Complete Syllabus From Basics

REGISTER NOW



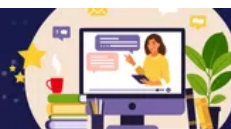
Logical Reasoning

21. A cat runs 20 metres towards East and turns to right, runs 10 m and turns to right, runs 9 m and turns to left, runs 5 m and turns to left, runs 12 m and finally turns to left and runs 6m. Now, which direction is the cat facing ?

- A East
B West
C North
D North-West

TAKE FREE CMAT MOCK TEST

WITH DETAILED SOLUTIONS AND ANALYSIS



22. How many such pairs of digits are there in the number 8314629 each of which has as many digits between them in the number as after arranging the digits in descending order?

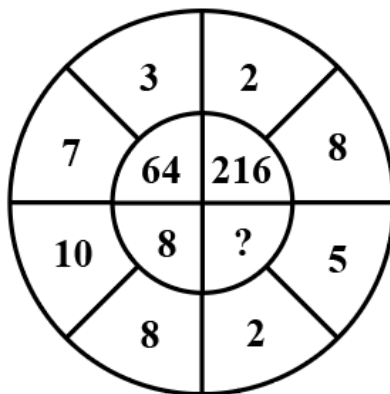
- A Two
- B Three
- C Four
- D Five

23. Four pair of words are given below, out of which the words in three pairs bear a certain common relationship.

Choose the pair in which words are differently related :

- A Waist : Belt
- B Neck: Tie
- C Wrist : Band
- D Shoe : Laces

24. The missing term in the following figure is:



- A 125
- B 36
- C 81
- D 27

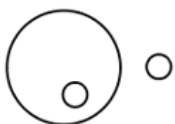

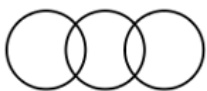

DOWNLOAD CMAT PREVIOUS YEAR PAPERS



25. A cube of white material is painted red on all its surfaces. If it is cut into 125 smaller cubes of same size, then how many cubes will have two sides painted red?

- A 18
- B 32
- C 24
- D 36

26. Match List I with List II :

List I (Group of things)		List II (Diagrams)
(A) Flowers, White , Clothes	I.	
(B) Furniture, Books, Table	II.	
(C) Carrot, Food, Vegetable	III.	
(D) Pocket, Shirt, Collar	IV.	

Choose the correct answer from the options given below :

- A A-I, B-III, C-IV, D-II
- B A-I, B-III, C-II, D-IV
- C A-III, B-I, C-II, D-IV
- D A-III, B-I, C-IV, D-II

27. Given below are two statements : one is labelled as Assertion (A) and the other is labelled as Reason (R) :

Assertion (A) : Seeds should be treated with fungicide solution before being sown.

Reason (R): Seeds do not germinate, unless treated with fungicide solution.

In the light of the above statements, choose the correct answer from the options given below :

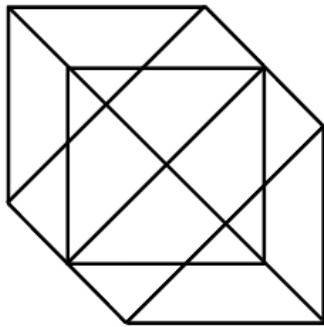
- A Both (A) and (R) are true and (R) is the correct explanation of (A)
- B Both (A) and (R) are true but (R) is not the correct explanation of (A)
- C (A) is true but (R) is false
- D (A) is false but (R) is true



CMAT EXAM PATTERN

CHECK OUT HERE

28. How many triangles does the following figure have?



- A 20
- B 24
- C 18
- D 26

29. The following question consists of a statement and arguments I and II. Choose the best option.

Statement : Should the renowned businessman of the country who have committed crime unknowingly, be met with special treatment ?

Argument : I Yes. The renowned businessman do not commit crime intentionally.

Argument : II No, its our policy that everybody is equal before law.

- A Only argument I is strong .
- B Only argument II is strong.
- C Neither argument I nor II is strong.
- D Both arguments I and II are strong.

30. Identify the wrong term in the series:

69 , 55 , 26, 13,5

- A 5
- B 13
- C 26
- D 55



31. In a certain code language, POETRY is written as QONDSQX. How is MORE written in that code language ?

- A LNNQD
- B>NNLQD
- C NLPQF
- D NLNQD

32. Pointing towards a lady in the picture, Purnima said "She is the mother of Neha whose father is my son." How is Purnima related to the lady in the picture?

- A Mother
- B Cousin
- C Aunt
- D Mother-in-law

33. Consider the statements given below followed by two assumptions and decide which of the assumptions is/are implicit in the statement.

Statement : The company has recently announced a series of incentives to the employees who are punctual and sincere.

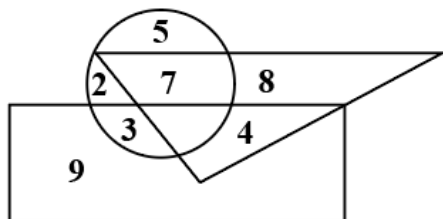
Assumption : I Those who are not punctual at present may get motivated by the announcement

Assumption : II The productivity of the company may increase.

- A Only assumption I is implicit
- B Only assumption II is implicit
- C Neither assumption I nor II is implicit
- D Both assumptions I and II are implicit



34. If the triangle represents doctors, the circle represents teachers and the rectangle represents film-makers in the following diagram



Then which numbers represent teachers who are neither doctors nor film-makers ?

- A 9, 4
- B 8, 7
- C 2, 3
- D 2, 5

35. Arrange the following words in a meaningful sequence and choose most appropriate sequence from the given alternatives.

- A. Puberty
- B. Adulthood
- C. Childhood

- D. Infancy
- E. Adolescence

Choose the correct answer from the options given below :

- A D, B, A, E, C
- B B, D, E, C, A
- C D, C, A, E, B
- D C, D, E, A, B

36. A dice is thrown three times and its three different positions are given below. The number on the face opposite the face showing 3 is:



- A 1
- B 4
- C 5
- D 6

DOWNLOAD CMAT PREVIOUS PAPERS



37. A clock is set right at 11 am. The clock gains 12 minutes in a day. What will be the true time when the watch indicates 5 pm on the next day?

- A 48 minutes past 3 pm
- B 45 minutes past 3 pm
- C 45 minutes past 4 pm
- D 51 minutes past 4 pm

38. L, M, N, O, P, Q and R are sitting around a circular table facing the centre. O is sitting between L and R. Q is second to the right of R and P is second to the right of Q. N is not an immediate neighbour of R. Which of the following statements are correct?

- A. P sits to the opposite of N
- B. L sits exactly between O and P
- C. M is third to the left of N
- D. R is second to the right of L

Choose the most appropriate answer from the options given below :

- A B, C and D only
- B A and B only
- C C and D only

D B and D only

39. A statement followed by two conclusions numbered I and II is given below. Assume everything in the statements to be true, consider the two conclusions and decide which of them logically follows beyond a reasonable doubt from the information given in the statement.

Statement : Any young man, who makes dowry as a condition for marriage, discredits himself and dishonours womanhood.

Conclusion: I Those who take dowry in marriage should be condemned by society

Conclusion : II Those who do not take dowry in marriage respect womanhood

- A Only conclusion I follows
B Only conclusion II follows
C Both I and II follow
D Neither I nor II follows



40. Choose the correct word from the given alternatives which bears the same relationship to the third word as the first two.

Anaemia : Blood :: Anarchy : ?

- A Lawlessness
B Monarchy
C Government
D Disorder



Language Comprehension

41. Choose the odd one out.

- A He had been working on this project for seven years.
B Shankar had been playing in the field for seven hours.
C Shabari had been waiting for Rama's arrival for many years.
D We all have been residing in this society since 1997.



42. Which one of the following is grammatically correct?

- A Roma said to Hema that Rajan was absent
- B Roma said to Hema that Rajan is absent.
- C Roma told Hema that Rajan was absent.
- D Roma told Hema, Rajan was absent.

43. Pick the correct option to complete the following sentence. Mr. Jackson is known _____ us.

- A By
- B With
- C To
- D On

44. Choose the alternative which best expresses the **meaning of the underlined phrase** in the following sentence.

The officer was in the soup when there was a raid in his office.

- A sleeping
- B in trouble
- C collecting money
- D angry



45. Which one of the following is a grammatically correct sentence?

- A I have been waiting you for an hour.
- B I have been awaiting you for a hour.
- C I have awaited for you for a hour.
- D I have been awaiting you for an hour.

46. Read the following sentence and from the options given below identify its correct passive form.
Your story does not interest me.

- A I am not interested by your story.
- B I am not interested in your story.
- C I am not interested at your story.
- D I am not interested to your story.

Instructions [47 - 49]

Comprehension: The Earth is getting warmer and the oceans are rising. Why is it happening so? One answer is that it could simply be a part of a natural process. After all, there have been ice ages and long periods of warmth in the past. However, now scientists believe that human activity is the cause. For more than 200 years human activities have changed drastically. (i) _____ (for example, industrial pollution) which have contributed to creating a layer in the atmosphere around the Earth like a giant glass container, affecting the temperatures. Unwariness (ii) _____ of humans may lead to a big global catastrophe in the future, harmful not only to the existence of humanity but to other living and non-living beings too.

In the given passage, there are blanks which have been numbered.

47. Which of the following options is closer to the meaning of the underlined word (ii)?

- A Heedfulness
- B Dereliction
- C Vigilance
- D Alertness



48. Which of the following options is the near opposite of the underlined word (i) ?

- A Hastily
- B Abruptly
- C Fractionally
- D Sharply

49. On the basis of the paragraph which of the following statements is correct?

- A Scientists now believe that warming of the Earth is a natural process.
- B The last two centuries have witnessed human activities detrimental to atmospheric naturalness
- C Human activities may lead to a major harm to the existence of other living beings too.
- D Industrial pollution has drastically increased in the last two centuries.

50. Match List I with List II :

	List I		List II
A.	An embarrassing mistake	I.	A Faux pas
B.	Like a weak old woman	II.	Anile
C.	Song in praise of God	III.	Hymn
D.	Murder of wife	IV.	Uxoricide

Choose the correct answer from the options given below:

- A A-I, B-II, C-III, D-IV
- B A-IV, B-III, C-II, D-I

C A-III, B-I, C-II, D-IV

D A-II, B-III, C-IV, D-I



51. Arrange the following in the correct order.

- A. The founder of this tradition was a thirteenth-century poet, Jayadeva, who wrote in Sanskrit.
 - B. Later poets like Vidyapati in Maithili, Narsi in Gujarati, and Chandidas in Bengali, followed Jayadeva's Gita Govinda as the model for their songs.
 - C. At present, a huge repository of song poems dedicated to Sri Krishna in the same tradition is available to contemporary Krishna devotees.
 - D. Mirabai inherited a long, rich tradition of song-poems dedicated to Sri Krishna.
- Choose the correct answer from the options given below :

A C, D, B, A

B D, A, C, B

C D, A, B, C

D C, B, D, A

52. Given below are two statements : one is labelled as Assertion (A) and the other is labelled as Reason (R) :

Assertion (A) : The following sentence is an example of a simple sentence :
"Without saying a word, Ashraf ran away from home, in great haste."

Reason (R): A simple sentence is a sentence which contains a main clause and one or more subordinate clauses, dependent on the main clause.

In the light of the above statements, choose the correct answer from the the options given below :

A Both (A) and (R) are true and (R) is the correct explanation of (A)

B Both (A) and (R) are true but (R) is not the correct explanation of (A)

C (A) is true but (R) is false

D (A) is false but (R) is true

53. Read the following sentences and choose the ones which are grammatically correct.

- A. The book you want is out of print.
- B. He was wounded in the leg.
- C. I walk to the store and I bought milk.
- D. We enjoys horror movies.

Choose the correct answer from the options given below :

A A and B only

B B, C and D only

C A, C and D only

D A, B and D only



54. Choose the alternative which best expresses the **opposite meaning** of the underlined phrase in the following sentence.

At his wits end, he turned to his old trade.

- A Knowing what to do
- B Not knowing what to do
- C Being overjoyed
- D Confidently

55. Match List I with List II :

	List I		List II
A.	I hurt myself.	I.	Emphatic pronoun
B.	This book is mine.	II.	Distributive pronoun
C.	He himself said so.	III.	Reflexive pronoun
D.	Each of the boys gets a prize.	IV.	Demonstrative pronoun

Choose the correct answer from the options given below :

- A A-I, B-II, C-III, D-IV
- B A-I, B-III, C-IV, D-II
- C A-III , B-IV, C-I, D-II
- D A-II, B-III, C-IV, D-I

56. Given below are two statements :

Statement I: An adjective is said to be used attributively when it qualifies a noun directly

Statement II: An adjective is said to be used predicatively when it qualifies a noun or pronoun indirectly

In the light of the above statements, choose the most appropriate answer from the options given below :

- A Both Statement I and Statement II are true
- B Both Statement I and Statement II are false
- C Statement I is true but Statement II is false
- D Statement I is false but Statement II is true



CMAT Online Coaching By Toppers

Covers Complete Syllabus From Basics

REGISTER NOW



57. Rearrange the following components to get a meaningful sentence. A Sita and Ram
- B. the tragic events in Ayodhya ,
 - C. blissfully unaware of
 - D. walk through
 - E. the forest with great gaiety

- A C, B, A, D, E
- B B, D, A, C, E
- C C, E, D, B, A
- D A, D, E, C, B

58. Read the following sentences and choose the ones belonging to the domain of complex sentences.

- A. That Shankar is clever is certain.
 - B. I do not know whether the principal is in the office.
 - C. Rennie is not only kind but also devoted.
 - D. Can you tell me the reason why Mukti never smiles ?
- Choose the correct answer from the options given below :

- A A, Band Only
- B B, C and D only
- C A, C and D only
- D A, B and D only

Instructions [59 - 60]

Comprehension: Read the following excerpt and answer the questions that follow : "I have not planned anything. I am trying to observe the enemy's movements but have not been able to understand their actics . However, I trust in Jagdamba, who has always helped me out of the clutches of defeat. I will not lose my faith in her in these troubled times."

59. The speaker in the given excerpt is a ____ speaker

- A First person
- B Second person
- C Third person
- D Not clear



60. Which of the following is incorrect on the basis of the given excerpt.

- A The speaker seems to be a warrior.
- B He is quite religious
- C He has not been able to know about his enemy's plans
- D He is so upset that his faith has wavered now



General Awareness

61. Which of the following statements are correct?

- A. Finance Commission is a constitutional body, constituted by the President under article 280 of the constitution.
- B. First Finance Commission was constituted under chairmanship of K.C. Niyogi.
- C. The 15th Finance Commission for the period 2020-25 was constituted with N.K. Singh as chairman.
- D. The R Chelliah Committee was constituted in 1994 for suggesting reforms in banking system.

Choose the correct answer from the options given below :

- A B, C & D only
- B A & C only
- C A, B & Conly
- D A & B only



62. Which of the following statements are correct?

- A. The Earth is $22\frac{1}{2}^{\circ}$ tilted on its axis.
- B. It takes 23 hours, 56 minutes and 4.091 seconds to rotate on its axis.
- C. It takes 365 days, 5 hours and 48 minutes to revolve around the sun.
- D. The Earth is also known as Blue Planet.

Choose the correct answer from the options given below :

- A A and B only
- B B, C and D only
- C A and C only
- D C and D only

63. The Imperial I and II, one of the tallest buildings in India, are located at :

- A New Delhi
- B Kolkata
- C Mumbai
- D Chandigarh

64. 'The Citizenship Act' was amended by the 'Citizenship (Amendment Bill)' and was passed by the parliament on :

- A October 22, 2021
- B December 11 , 2019
- C January 15, 2020



65. The Crown Representative's Police, is the old name of

- A CISF
- B CRPF
- C NSG
- D SSB

66. 'Pulitzer Prize' is awarded in the field of:

- A Literature
- B Journalism
- C Music
- D Public Service

67. Match List I with List II :

	List I		List II
A.	Chief Election Commissioner	I.	Sanjeev Khanna
B.	Chief Justice of India	II.	Jagdeep Dhankhar
C.	RBI Governor	III.	Sanjay Malhotra
D.	Chairman of Upper House	IV.	Rajiv Kumar

Choose the correct answer from the options given below :

- A A-II, B-I, C-III, D-IV
- B A-IV, B-III, C-I, D-II
- C A-IV, B-I, C-III, D-II
- D A-I, B-IV, C-III, D-II



68. Which of the following statements are correct?

- A. Speedy increase in the field of milk production is called white revolution .
- B. To increase the pace of white revolution , the operation flood was started.
- C. The father of operation flood was Dr. Verghese Kurien.
- D. The operation flood was started by National Dairy Research Institute in 1975.

Choose the correct answer from the options given below :

- A A & D only

- B B & Conly
- C A, B & Conly
- D A, B, C & D

69. Match List I with List II

	List I (Organisation)		List II (Founder)
A.	Abhinav Bharat	I.	Bhagat Singh
B.	Gadar Party	II.	Allan Octavian Hume
C.	Indian National Congress	III.	Lala Hardyal
D.	Bharat Naujawan Sabha	IV.	V.D. Savarkar

Choose the correct answer from the options given below :

- A A-II, B-I, C-IV, D-III
- B A-I, B-II, C-III, D-IV
- C A-IV, B-III, C-II, D-I
- D A-IV, B-III, C-I, D-II

70. Given below are two statements : one is labelled as Assertion (A) and the other is labelled as Reason (R) :

Assertion (A): There is a coalition government in the State of Maharashtra in India.

Reason (R) : No single party could secure majority in the house in recent elections of the Maharashtra State.

In the light of the above statements, choose the correct answer from the the options given below:

- A Both (A) and (R) are true and (R) is the correct explanation of (A)
- B Both (A) and (R) are true but (R) is not the correct explanation of (A)
- C (A) is true but (R) is false
- D (A) is false but (R) is true

DOWNLOAD CMAT PREVIOUS PAPERS



71. Which of the following statements are correct ?

- A. Vishwa Bharati is founded by Rabindra Nath Tagore
- B. Auroville Ashram is founded by Aurobindo Ghosh
- C. Golden Temple is founded by Guru Gobind Singh
- D. Khalsa Panth is founded by Guru Arjan Dev

Choose the correct answer from the options given below:

- A A and B only
- B A, B and C only
- C A and Conly

D B, C and D only

72. Which of the following statements are correct?

- A. Bharatanatyam is the famous dance of Tamil Nadu.
- B. Rukmini Devi is a famous artist of Bharatanatyam.
- C. Kathakali is a the famous dance of Andhra Pradesh .
- D. Birju Maharaj is associated with Kathakali as an artist.
- E. The theme of Mohiniyattam dance is love and devotion to God .

Choose the correct answer from the options given below :

A A, B, C only

B B, C, D only

C A, B, E only

D C, D, E only

73. Match List I with List II :

	List I (Committee of the Constituent Assembly)		List II (Chairman)
A.	Committee on the functions of the Constituent Assembly	I.	Pattabhi Sitaramayya
B.	House Committee	II.	G.V. Mavalankar
C.	Committee on the rules of procedure	III.	Dr. B.R. Ambedkar
D.	Drafting Committee	IV.	Dr. Rajendra Prasad

Choose the correct answer from the options given below :

A A-IV, B-I, C-III, D-II

B A-IV, B-II, C-I, D-III

C A-I, B-II, C-IV, D-III

D A-II, B-I , C-IV, D-III

**CMAT Online Coaching By Toppers**

Covers Complete Syllabus From Basics

REGISTER NOW

74. The famous speech ".I have a dream" is associated with :

A John F. Kennedy

B George Washington

C Benazir Bhutto

D Martin Luther King Jr.

75. Which of the following pairs of banks and their headquarters are correctly matched?

- A. Canara Bank - Mumbai
- B. Federal Bank - Kochi
- C. Indusulnd Bank - Mumbai

D. Punjab and Sind Bank - Chandigarh

E. Punjab National Bank- New Delhi

Choose the correct answer from the options given below :

A A, C, D and E only

B B, C and E only

C A, C and D only

D B and E only

76. Who was the founder of Bhudan movement?

A Rabindra Nath Tagore

B Vinoba Bhave

C Acharya Narendra Dev

D Aurobindo Gosh



77. Match List I with List II :

	List I		List II
A.	Volleyball	I.	Ring
B.	Table Tennis	II.	Service court
C.	Basketball	III.	Hook serve
D.	Badminton	IV.	Half court

Choose the correct answer from the options given below:

A A-II, B-III, C-IV, D-I

B A-III, B-I, C-II, D-IV

C A-II , B-IV, C-III, D-I

D A-III , B-IV, C-I, D-II

78. The first Chief Election Commissioner of India was :

A S.P. Sen Verma

B Sukumar Sen

C T. Swaminathan

D B.K. Mukherjee

79. Match List I with List II :

	List I		List II
A.	Gol Gumbaz	I.	Amritsar
B.	Nishat Bagh	II.	Bijapur
C.	Golden Temple	III.	Srinagar
D.	Anand Bhawan	IV.	Allahabad

Choose the correct answer from the options given below :

- A A-I, B-II, C-IV, D-III
- B A-II, 8-IV, C-I, D-.III
- C A-II, B-III, C-I, D-IV
- D A-III, 8-II, C-IV, D-I

DOWNLOAD CMAT PREVIOUS YEAR PAPERS



80. The first post office of India was opened in :

- A Delhi
- B Mumbai
- C Lucknow
- D Kolkata



CMAT EXAM PATTERN

CHECK OUT HERE

Innovation and Entrepreneurship

81. Match List I with List II :

	List I		List II
A.	Patent	I.	Self funding
B.	Bootstrapping	II.	Small contribution from many people
C.	Crowdfunding	III.	Change in business direction
D.	Pivot	IV.	Intellectual property protection

Choose the correct answer from the options given below :

- A A-IV, B-II, C-I, D-III
- B A-IV, B-I, C-II, D-III
- C A-IV, B-III, C-II, D-I
- D A-IV, B-I, C-III, D-II

TAKE FREE CMAT 2025 MOCK

WITH DETAILED SOLUTIONS AND ANALYSIS



82. Read the following statements and respond to the question that follows :

- A. Primary goal of a startup pitch is to secure funding or support from the Investors.
- B. 'Innovation' and 'adaptability' best describes an entrepreneurial mindset.
- C. A non-profit organisation is one of the examples of startup.
- D. Neeti Ayog was earlier known as planning commission.
- E. Dr. Manmohan Singh was the Governor of RBI and he died recently.

Choose the correct answer from the options given below :

- A A and B are correct statements
- B C and D are correct statements
- C A, B, D and E are correct statements
- D A, B and D are correct statements

83. Which term refers to the initial phase of a startup when it starts to develop its product?

- A Ideation
- B Pivoting
- C Scaling
- D Boot strapping

84. Which one of the following is not a correct statement ?

- A Dr. Manmohan Singh was the finance minister in the Union Government from 1991 to 1996 and initiated economic reforms.
- B Dr. Manmohan Singh was the Governor of the Reserve Bank of India from 1982 to 1985.
- C Dr. Manmohan Singh was the UGC Chairman in early nintees
- D Dr. Manmohan Singh was elected for the Loksabha and became the Prime Minister as member of the lower house.



JOIN CMAT 2025 CRASH COURSE

Covers Complete Syllabus

REGISTER NOW



85. Which of the following is/are one of the various 'Forms' of feasibility analysis :

- A Industry/Market analysis
- B. Corporate leadership analysis
- C. Organisational feasibility analysis
- D. Financial feasibility analysis
- E. Product/Service feasibility analysis

Choose the correct answer from the options given below :

- A A, C, D and E only

- B** A, C and D only
- C** A, B, C and D only
- D** C, D and E only

86. Given below are two statements : one is labelled as Assertion (A) and the other is labelled as Reason (R) :

Assertion (A) :

The venture capital investment assists in nurturing innovative entrepreneurship in India.

Reason(R) :

The venture capital investment is a risk financing generally available in the form of equity or quasi-equity like convertible loan instrument for supporting startups.

In the light of the above statements, choose the most appropriate answer from the the options given below :

- A** Both (A) and (R) are true and (R) is the correct explanation of (A)
- B** Both (A) and (R) are true but (R) is not the correct explanation of (A)
- C** (A) is true but (R) is false
- D** (A) is false but (R) is true

87. Given below are two statements : one is labelled as Assertion (A) and the other is labelled as Reason (R) :

Assertion (A) :

Other than 'Mind Mapping' , 'Reverse thinking' , 'Brainstorming', and 'Brainwriting' technology has made our work easier to generate quality idea for innovation and entrepreneurship.

Reason(R):

"Ideas are the building blocks for all innovation. They are what we work on , so the first step of starting with anything new is finding that idea. We must make use of the different tools and echniques available to us to come up with quality ideas."

In the light of the above statements, choose the most appropriate answer from the options given below :

- A** Both (A) and (R) are true and (R) is the correct explanation of (A)
- B** Both (A) and (R) are true but (R) is not the correct explanation of (A)
- C** (A) is true but (R) is false
- D** (A) is false but (R) is true

DOWNLOAD CMAT PREVIOUS PAPERS



88. Given below are two statements:

Statement I :

Incremental innovation is concerned with the gradual improvement of existing products, services, processes, competitive positions, and organisational paradigms.

Statement II :

Radical innovation involves a much higher risk than incremental innovation.

In the light of the above statements, choose the most appropriate answer from the options given below :

- A Both Statement I and Statement II are correct
- B Both Statement I and Statement II are incorrect
- C Statement I is true but Statement II is incorrect
- D Statement I is false but Statement II is correct

89. Given below are two statements:

Statement I: A business incubator typically takes an equity stake in the startups it supports.

Statement II: A business incubator provides early-stage companies with office space, mentorship, and resources in general to support them.

In the light of the above statements, choose the correct answer from the options given below :

- A Both Statement I and Statement II are true
- B Both Statement I and Statement II are false
- C Statement I is true but Statement II is false
- D Statement I is false but Statement II is true

90. Match List I with List II:

	List I		List II
A.	Innovators	I.	These people are rarely leaders but they do adopt the new idea
B.	Laggards	II.	These are people who represent opinion leaders
C.	Early majority	III.	These people are bound by tradition and are very conservative
D.	Early adopters	IV.	These are people who want to be the first to try an innovation

Choose the correct answer from the options given below :

- A A-IV, B-III, C-II, D-I
- B A-I, B-II, C-III, D-IV
- C A-IV, B-III, C-I, D-II
- D A-IV, B-II, C-III, D-I



91. Given below are two statements : one is labelled as Assertion (A) and the other is labelled as Reason (R) :

Assertion (A) :

'Scaling a business' means expanding the business to serve more customers.

Reason(R) :

A small, specialized segment of the market is known as niche market.

In the light of the above statements, choose the correct answer from the options given below :

- A Both (A) and (R) are true and (R) is the correct explanation of (A)
- B Both (A) and (R) are true but (R) is not the correct explanation of (A)
- C (A) is true but (R) is false
- D (A) is false but (R) is true

92. Which of the following is the primary purpose of a 'pitch deck' ?

- A To design a product
- B To present the business idea to potential investors
- C To recruit employees
- D To manage daily operations

93. Read the following statements carefully and respond the question that follows .

- A. In the given situation a manufacturing plant may be an example of a business incubator.
- B. Fixed monthly income is the advantage of entrepreneurship.
- C. A shared workspace offering resources and support to new startups is known as business incubator.
- D. Only youngsters may become entrepreneurs.
- E. Only experienced middle aged person may start a business.

Choose the correct answer from the options given below :

- A Only A, B and E are true
- B Only A and C are false
- C Only A, B and D are true
- D Only B, D and E are false



94. Given below are two statements

Statement I : "Innovation defined as the creation or the adoption of new ideas, products, services, programs, technology, policy, structure or new administrative system is acknowledged as a source of sustained competitive advantage of many organisations

Statement II: The innovation adoption process does not depend upon 'Initiation stage' that includes recognition of a need, knowledge acquisition, Initial attitude formation and innovation selection.

In the light of the above statements, choose the correct answer from the options given below:

- A Both Statement I and Statement II are true
- B Both Statement I and Statement II are false
- C Statement I is true but Statement II is false
- D Statement I is false but Statement II is true

95. Which four of the following are entrepreneurial strategies?

- A. Investing money for safe and secured return
- B. "Being fastest with the mostest"
- C. Reform, rather than revolutionise
- D. Finding and occupying a specialized "ecological niche"
- E. Validate and adapt your business model

Choose the correct answer from the options given below :

- A C, A, Band D only
- B A, B, D and E only
- C A, B, C and E only
- D B, C, D and E only

96. Given below are two statements :

Statement I:

Pivoting in a startup context, refers to changing the business model or strategy in response to market feedback.

Statement II :

Pivoting always involves changing the target market essentially.

In the light of the above statements, choose the correct answer from the options given below :

- A Both Statement I and Statement II are true
- B Both Statement I and Statement II are false
- C Statement I is true but Statement II is false
- D Statement I is false but Statement II is true

DOWNLOAD CMAT PREVIOUS YEAR PAPERS



97. Match List I with List II :

	List I		List II
A.	Scalability	I.	Early stage product having minimum basic features
B.	Value proposition	II.	Ability to grow
C.	Lean startup	III.	Experiments based concept started in the early 2000 in the Silicon Valley
D.	MVP (Minimum Viable Product)	IV.	Unique selling point (USP)

Choose the correct answer from the options given below :

- A A-II, B-I, C-IV, D-III
- B A-II , B-I, C-III, D-IV
- C A-II, B-III, C-I, D-IV

D A-II, B-IV, C-III, D-I

98. Concept of venture capitalist may be simplified as

- A Your idea and your money
- B. Your idea and my money
- C. My idea and my money
- D. My idea and your money
- E. Your idea and public money

Choose the correct answer from the options given below:

- A B and D only
- B B only
- C D only
- D B, D and E only

99. Given below are two statements : one is labelled as Assertion (A) and the other is labelled as Reason (R) :

Assertion (A) :

Business accelerators are setup with the primary objective to offer mentorship and resources to speed up growth of startups.

Reason (R) :

Most of the startups face difficulties and challenges in their growth stage.

In the light of the above statements, choose the most appropriate answer from the options given below :

- A Both (A) and (R) are true and (R) is the correct explanation of (A)
- B Both (A) and (R) are true but (R) is not the correct explanation of (A)
- C (A) is true but (R) is false
- D (A) is false but (R) is true



100. Match List I with List II :

	List I		List II
A.	Serial Entrepreneur	I.	Earning Ratio
B.	Blue ocean strategy	II.	External ideas utilized
C.	Open innovation	III.	Creating uncontested market space
D.	Profit margin	IV.	Multiple ventures

Choose the correct answer from the options given below :

- A A-IV, B-III, C-II, D-I
- B A-III, B-IV, C-II, D-I
- C A-IV, B-I, C-II, D-III
- D A-I, B-III, C-II, D-IV



Answers

Quantitative Techniques and Data Interpretation

1.B	2.B	3.D	4.A	5.A	6.B	7.D	8.D
9.A	10.D	11.A	12.A	13.D	14.C	15.D	16.D
17.C	18.B	19.D	20.A				

Logical Reasoning

21.C	22.C	23.D	24.D	25.D	26.D	27.C	28.B
29.B	30.A	31.D	32.D	33.D	34.D	35.C	36.D
37.C	38.D	39.C	40.C				

Language Comprehension

41.D	42.C	43.C	44.B	45.D	46.B	47.B	48.C
49.B	50.A	51.C	52.C	53.A	54.A	55.C	56.A
57.A	58.D	59.A	60.D				

General Awareness

61.C	62.B	63.C	64.B	65.B	66.B	67.C	68.C
69.C	70.A	71.A	72.C	73.D	74.D	75.B	76.B
77.D	78.B	79.C	80.D				

Innovation and Entrepreneurship

81.B	82.C	83.A	84.D	85.A	86.B	87.A	88.A
89.A	90.C	91.B	92.B	93.D	94.C	95.D	96.C
97.D	98.A	99.A	100.A				

Explanations

Quantitative Techniques and Data Interpretation

Logical Reasoning

Language Comprehension

General Awareness

Innovation and Entrepreneurship



